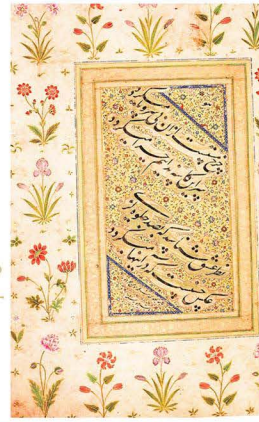




'JALI' WALLPAPER

A contemporary culture where designs
portray the notions of shared
ancestral arts



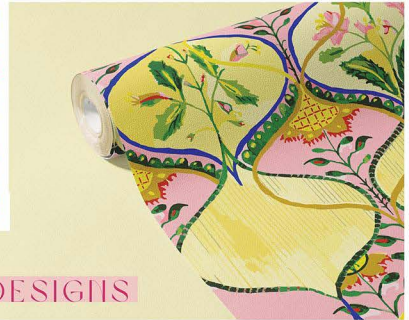
SIGNED MUHAMMAD MU'AMIL
THE BORDERS MUGHAL INDIA
17TH CENTURY

LEGACY DESIGNS

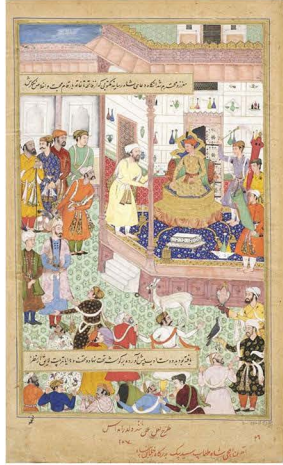
Gentle structures of history...



Introducing the
'Gulabi Print'



AKBAR RECEIVES THE IRAQI
AMBASSADOR SAYYID BEG III 1562
MUGHAL ERA



Print in colourway 'Emerald
Entourage'

'AMBASSADOR' PRINT

History, identity and sense of
produce patterns which share
a rich flowing source of
inspiration.



Print in colourway 'Emissary Pink'



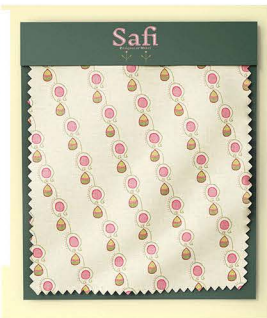
'MAHABIR MOON' CLOTH

Artefacts and the natural environment are reinterpreted to imagine ethereal florals in today's worlds.



EMPEROR SHAH JAHAN'S ELEPHANT
'MAHABIR DEB' MUGHAL ERA

'ELEPHANT'S TRUNK' PRIIT



'DARA' PRIIT

'MAHABIR MOON' PRIIT

'DEB BUD' PRIIT

Sense of Tradition



'DEB BUD' PRIIT

'DARA' PRIIT

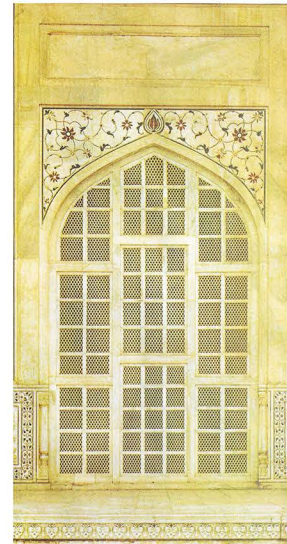
MARRIAGE OF HISTORY AND CONTEMPORARY



'LILLY' WALLPAPER

FLORALS WHICH BLOSSOM WITH THE MEMORIES OF THE PAST.

NOSTALGIA OF TODAY



POHITTED MOSLEM ARCHWAY, TAJ MAHAL



'MARBLE' PPHIT

BLENDING HISTORIES



'TAF PPHIT

SAFIYAH ALTAF SURFACE PATTERN & TEXTILES



Product Choice:
Plates
Round Coasters



Visualisation's



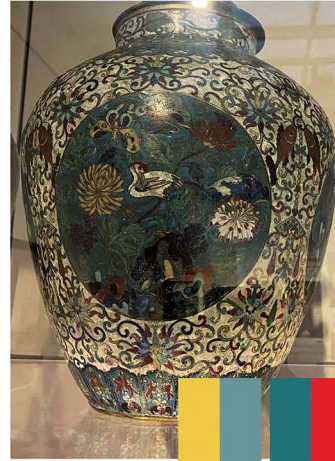
Design Response



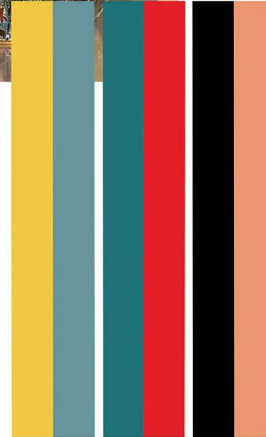
Fluid
Nature
Water Scapes
Contemporary Mythic Birds

GLYNN VIVIAN

17th Century baluster vases made from cloisonne enamel on copper, brought by Glynn in Beijing in 1870.



Colour Palette



Anthropologie
House of Hackney
Holly and Pear Dish

Rupy .C. Tut

Baashinda (Urdu)
Resident

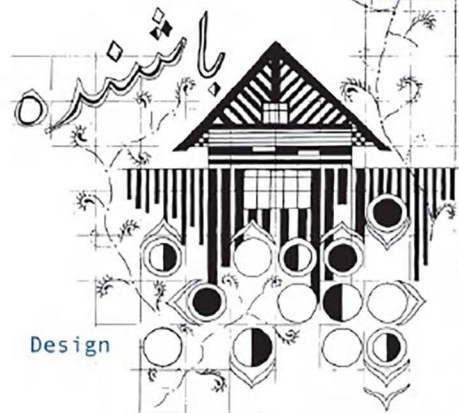


Swansea



Maharaja 1847 Lahore

Design



Design



South Asian Diaspora



Hausla (Urdu)
Emotional
Courage

Birmingham
Post Card

Narrative: Using emotional courage to undertake journeys for generations. Inspired by a heritage of migration, I have reflected on my own journey from city to city gaining inspiration from buildings, Urdu language and foliage. Which represent re-placement. These designs are communicated using retro palettes and infusions of South Asian style motifs.

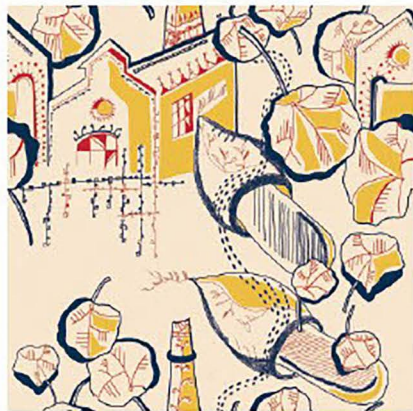
Mind The Gap Wallpaper
'Indian Palace'



Rastah



Colour

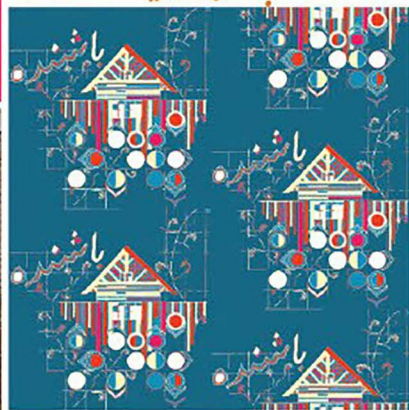


Jehan Ji Cahe Keren (Urdu)
Let Them Go Where They Feel Inclined

جہاں جی چاہے جایا کریں۔



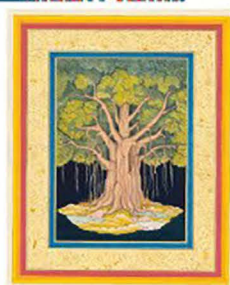
Colour



Elements Viggo Lamp



Rupy . C. Tut



Tote Bag



Window Film



Wallpaper



Ceramic Ware



Co-Ordinate Patterns



Dwell Amongst...

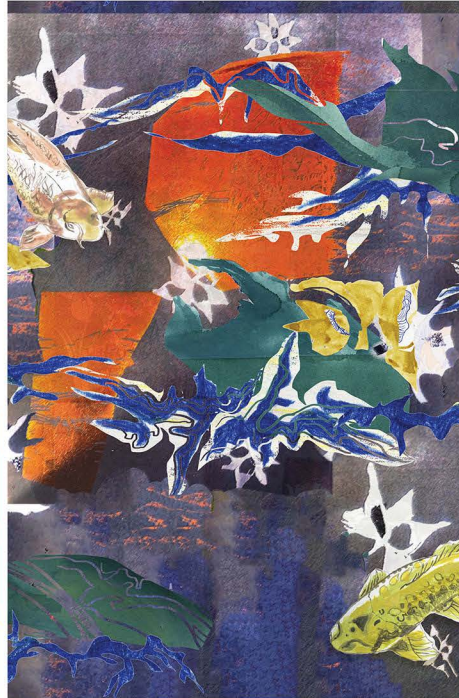
Plantasia Imagery



Mind The Gap Samurai and Geisha Wallpaper



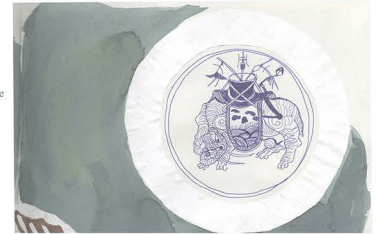
Lino and Ink



Pattern development

Glynn Vivian

Paper
Pen
Gouache



Rastah
Volume 7 Genesis



Metal

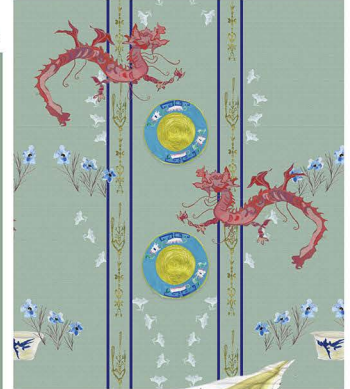
Dwell Amongst...



Yayu 2022



Pattern development



Prakhar

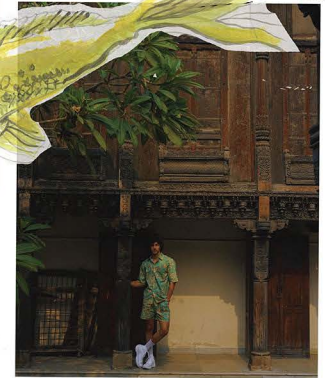


Tyvek Paper, Gouache, Pencil



Kazari- Decoration and Display

Japanese concept An allay of ritual and pleasure prescribes the transformation of the place or space where happenings take place on extraordinary days - Reuter



Dwell Amongst...

SAFIYYAH ALTAF
CREATION & DESIGN



clear discharge hand dyed silk

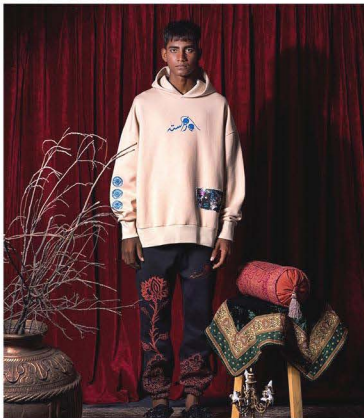
Upholstery visualisation



screen print with puff binder



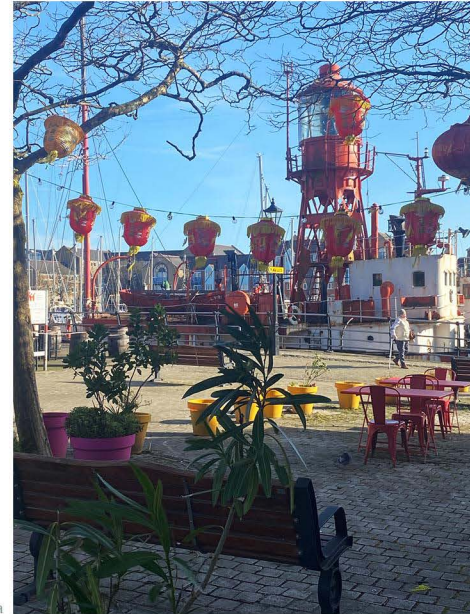
Rastah



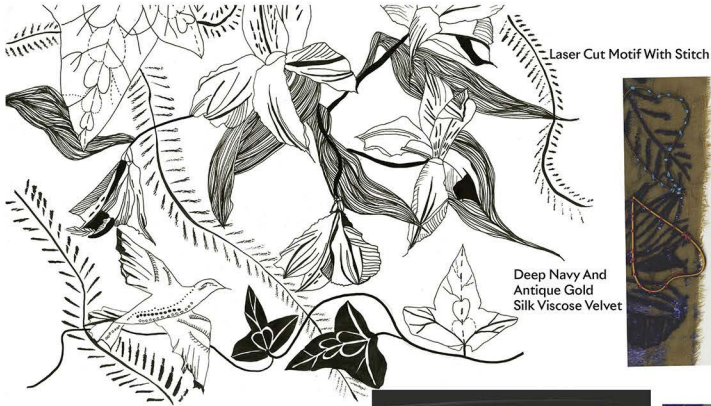
laser cut and
Mahogany stained Birch wood



wallpaper visualisation



Swansea Marina



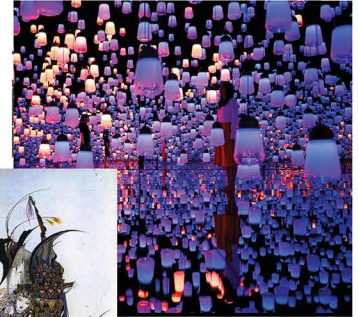
Laser Cut Motif With Stitch

Deep Navy And Antique Gold Silk Viscose Velvet



Iris Van Herpen

Forest of resonating lamps, Team Lab



Hand Drawn Ink

The Spirit Of Ecstasy



A Moment In Time



To die before one dies, Extinction of oneself in Universal Being.



Loretta Roome



Pearl Beads Embroidery Metallic Thread Silk Viscose Satin



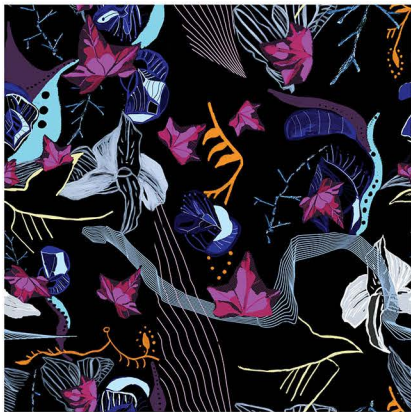
Yoshitaka Amano



The young consumer is on a quest for something greater than themselves, connecting to a deeper spiritual side. Along side this, they want to escape into mystical thinking... Gvasalia.

BESPOKE DESIGN

ROLLS-ROYCE MOTOR CARS

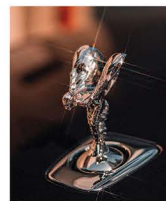
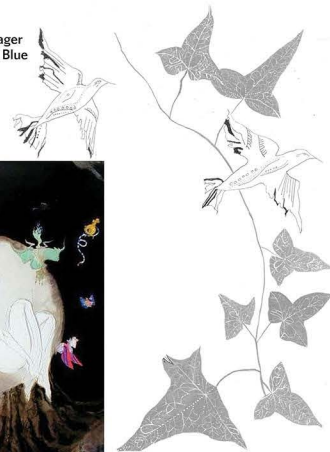


Digital Pattern For Gallery Potential For Immersive Interaction



Phantom Extended Voyager
In Ardent Red and Navy Blue

Yoshitaka Amano



Spirit Of Ecstasy
Versace



Ezgi Cinar, Mikeala



Wood
Hand Painted
Copper



Phantom Extended Voyager In Salamanca Blue

BESPOKE DESIGN

ROLLS-ROYCE MOTOR CARS